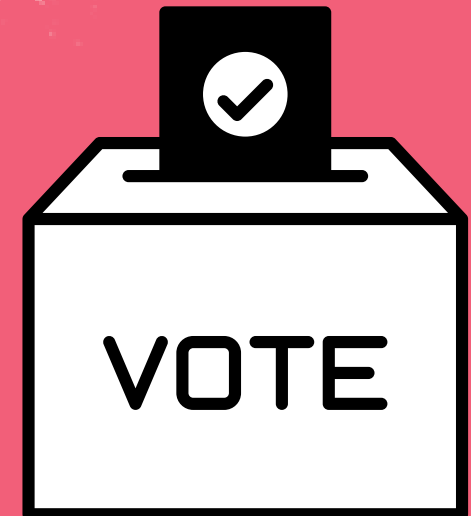


# ARE YOU A MIGRANT IN NORTHERN IRELAND?

**USE YOUR VOICE**  

---

**REGISTER TO VOTE**



# **WHO IS ELIGIBLE**

**to vote in Northern  
Ireland?**

**All persons who are:**

- **Listed on the electoral register i.e. have registered to vote**
- **At least 18 years old on polling day**
- **British, Irish, European Union and Commonwealth citizens (this includes Commonwealth refugees)**
- **Only people who are resident in Northern Ireland can apply**

**- Electoral Office of Northern Ireland**

# WHAT INFORMATION

must I provide to register to vote?

**Full Name**

**National Insurance Number\***

**Date of Birth**

**Address**

\* You can still register if you don't have a National Insurance number

# HOW DO I REGISTER?

**\*registration must be completed in English**



## Apply Online

[www.gov.uk/register-to-vote](http://www.gov.uk/register-to-vote)  
(This is the easiest and quickest way)



**OR**

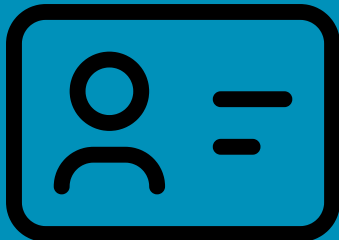


## Apply By Post

Download or request an application form  
from the Electoral Office website  
[www.eoni.org.uk](http://www.eoni.org.uk)



**THEN**



## Verify Identity.

EONI will write to you and tell you if you have been  
successfully registered, or if you need to provide  
more information to verify your identity

# I'VE REGISTERED now what?

- Before an election, you will receive a Polling Card by post. It will tell you when and where to vote.
- Bring your ID and Polling Card to the Polling Station. Staff are there to help if you need it.

Poll Card	
.....	
BELFAST SOUTH	
Voting information	
Polling day	
Polling hours	7.00am - 10.00pm
Your polling station will be	ADDRESS OF POLLING STATION

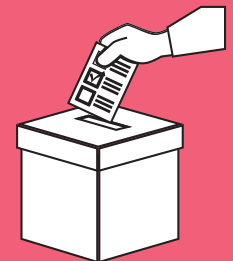
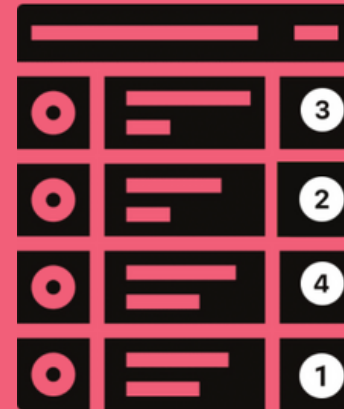
Please turn over

UK General Elections:      Select ONE candidate

NI Assembly Elections:      Put a number 1 beside your preferred candidate, 2 beside the second and so on. You do not have to vote for everyone, stop when you are satisfied.

NI Council Elections:

- When you are finished, place your ballot paper in the box.



# ACCEPTABLE ID

On voting day, you can use the following ID documents:

- A UK, Irish or EEA driving licence (photographic part) (provisional accepted)
- A UK, Irish or EU passport (or Irish Passport Card)
- An Electoral Identity Card
- A Translink SmartPass

## Electoral ID Card

You can apply for an Electoral ID Card for FREE if you do not have any of the documents above. (It can also be used as official ID e.g. when travelling between NI and GB). You must register to vote first and apply for your ID in good time.

[Apply Here](#)

[www.eoni.org.uk/Electoral-Identity-Card/How-to-apply](http://www.eoni.org.uk/Electoral-Identity-Card/How-to-apply)



# **ELIGIBLE COUNTRIES**

You can register to vote if you are a **citizen** of...

## **COMMONWEALTH COUNTRIES**

- Antigua & Barbuda
- Australia
- The Bahamas
- Bangladesh
- Barbados
- Belize
- Botswana
- Brunei
- Cameroon
- Canada
- Dominica
- Fiji
- Ghana
- Grenada
- Guyana
- India
- Jamaica
- Kenya
- Kiribati
- Lesotho
- Malawi
- Malaysia
- Maldives
- Malta
- Mauritius
- Mozambique
- Namibia
- Nauru
- New Zealand
- Nigeria
- Pakistan
- Papua New Guinea
- Rep of Cyprus
- Rwanda
- St Christopher & Nevis
- St Lucia
- St Vincent & The Grenadines
- Seychelles
- Sierra Leone
- Singapore
- Solomon Islands
- South Africa
- Sri Lanka
- Swaziland
- Tanzania
- Tonga
- Trinidad & Tobago
- Tuvalu
- Uganda
- United Kingdom
- Vanuatu
- Western Samoa
- Zambia
- Zimbabwe

# **ELIGIBLE COUNTRIES**

You can register to vote if you are a **citizen** of...

## **BRITISH OVERSEAS TERRITORIES**

- Anguilla
- Bermuda
- British Antarctic Territory
- British Indian Ocean Territory
- Cayman Islands
- Falkland Islands
- Gibraltar
- Hong Kong\*
- Montserrat
- Pitcairn, Henderson, Ducie & Oeno Islands
- St Helena & Dependencies (Ascension and Tristan da Cunha Islands)
- South Georgia & South Sandwich Islands
- Turks and Caicos Islands
- Virgin Islands

**\*Former residents of Hong Kong who hold a British Overseas Territories, British Nationals (Overseas) or British Overseas passport qualify for registration**



# **ELIGIBLE COUNTRIES**

You can register to vote if you are a **citizen** of...

## **EUROPEAN UNION MEMBER STATES**

- Austria
- Belgium
- Bulgaria
- Croatia
- Cyprus
- Czech Republic
- Denmark
- Estonia
- Finland
- Malta
- Netherlands
- Poland
- Portugal
- Romania
- Slovakia
- Slovenia
- Spain
- Sweden
- France
- Germany
- Greece
- Hungary
- Ireland
- Italy
- Latvia
- Lithuania
- Luxembourg

# **FAQS**

## **(Frequently asked questions)**

- I am an **asylum seeker from a Commonwealth country**- can I register to vote?
  - **NO** - Because you do not yet have *Leave to Remain* in the United Kingdom, you are not considered to be a "qualifying Commonwealth citizen" for the purposes of voter registration.
- I am a **refugee (with *Leave to Remain*) from a Commonwealth country** - can I register to vote?
  - **YES** - You should apply for an Electoral ID Card if you need to prove your identity.
- I am a **refugee but I am NOT from a Commonwealth country** - can I register to vote?
  - **NO** - You must be a citizen of an eligible country to be eligible to vote. If you choose to become a British citizen you will secure the right to vote.
- I have **EUSS settled or pre-settled status** - can I register to vote?
  - **YES** - You should apply for an Electoral ID Card if you need to prove your identity.
- Is there anything else I need to know?
  - **YES** - When you join the electoral register, you can apply for an Electoral ID card. You may also be called for jury service.
- I believe I am eligible to vote but my registration has been refused, who can help?
  - **Contact:** [migrationjustice@lawcentreni.org](mailto:migrationjustice@lawcentreni.org)

Produced by



**Migration  
Justice  
Project**

A Project of

